



NAKOSHI GLOBAL PVT. LTD.

Manufacturer, Supplier and Exporter of Plug Insert, Plastic Injection Parts, Fastener & OEM Parts

Our company



Providing Electrical, Electronics, Metal, Hybrid Components and Value Added Products: Plug Insert, Plastic Injection Parts, Lithium Coin Battery, Fastener, Fuses, OEM Parts, Stamped and Turned Parts & Other Products

Manufacturer, Supplier and Exporter of Plug Insert, Plastic Injection Parts, Lithium Coin Battery, Fastener and all OEM Parts. Market Leader in Hybrid Components.

Nakoshi Global Private Limited, Carry out business of Manufacturing and export of Electrical, Electronics, Hybrid Components and Value Added Products: Plug Insert ~ Plastic Injection Parts~ Lithium Coin Battery~ Stamped & Turned Parts~ Plug Moulds~ Injection Moulding Machine ~Cables~ Sockets~ Plug Tops~ Cable Terminals~ USB Cables~ Crimping Machines~ Fuses~ Switches~ Fastener~ OEM Parts and Other Products ~ Metal~ ~Building Materials ~ Mineral Products~ Coal~ Industrial Packing~ Chemical ~ Other Products

Nakoshi is an international Electrical, Electronics, Hybrid Components and Value Added Products Company with a focus on Global.

Our quality standards are considered to be an industry benchmark towards which our competition strives. Our products put customer safety first.

Nakoshi is major supplier of Metal, Building Materials, Mineral Products-High purity quartz, feldspar, Mica and other minerals, Coal, Industrial Packing, Chemical & Other Products.

We look forward to receiving your individual enquiries for which we are sure to be able to work out innovative and economical solutions.

Our product line includes:

I) Plug Insert & Finish Plug:



- Plug Insert/Finished Plug All World Standard

India	Europe	USA	Turkey
Middle East	Italy	Swiss	UK
South Africa	Brazil	Thailand	Indonesia
Danish	Australia	Japan	China
Korea	Israel	Argentina	Other Country standard as per requirements

- All other Solution for Powers Cables Industry

-2.5 A Europe 4.0 MM Plug Insert



(Solid & Hollow, PBT+ GF 30% Retardant ,UL-94Cu3601,Nickel Plating, Environmental-Protection Type)



-2.5 A Europe 4.8 MM Plug Insert



(Solid & Hollow, PBT+ GF 30% Retardant ,UL-94Cu3601,Nickel Plating, Environmental-Protection Type)



- Europe Plug Insert



(Solid & Hollow, PBT+ GF 30% Retardant ,UL-94Cu3601,Nickel Plating, Environmental-Protection Type)



- Turkey Plug Insert



(Solid & Hollow, PBT+ GF 30% Retardant ,UL-94Cu3601,Nickel Plating, Environmental-Protection Type)



- Middle East 4.0 MM Plug Insert



(Solid & Hollow, PBT+ GF 30% Retardant ,UL-94Cu3601,Nickel Plating, Environmental-Protection Type)



- Middle East 4.8 MM Plug Insert



(Solid & Hollow, PBT+ GF 30% Retardant ,UL-94Cu3601,Nickel Plating, Environmental-Protection Type)



- UK Plug Insert



(Solid & Hollow, PBT+ GF 30% Retardant ,UL-94Cu3601,Nickel Plating, Environmental-Protection Type)



- Italy Plug Insert



(Solid & Hollow, PBT+ GF 30% Retardant ,UL-94Cu3601,Nickel Plating, Environmental-Protection Type)



- Swiss Plug Insert



(Solid & Hollow, PBT+ GF 30% Retardant ,UL-94Cu3601,Nickel Plating, Environmental-Protection Type)



- Brazil Plug Insert



(Solid & Hollow, PBT+ GF 30% Retardant ,UL-94Cu3601,Nickel Plating, Environmental-Protection Type)



- India & South Africa Plug Insert



(Solid & Hollow, PBT+ GF 30% Retardant ,UL-94Cu3601,Nickel Plating, Environmental-Protection Type)



- Thailand Plug Insert



(Solid & Hollow, PBT+ GF 30% Retardant ,UL-94Cu3601,Nickel Plating, Environmental-Protection Type)



- Indonesia Plug Insert



(Solid & Hollow, PBT+ GF 30% Retardant ,UL-94Cu3601,Nickel Plating, Environmental-Protection Type)



- Australian Plug Insert



(Solid & Hollow, PBT+ GF 30% Retardant ,UL-94Cu3601,Nickel Plating, Environmental-Protection Type)



- Danish Plug Insert



(Solid & Hollow, PBT+ GF 30% Retardant ,UL-94Cu3601,Nickel Plating, Environmental-Protection Type)



- Japan Plug Insert



(Solid & Hollow, PBT+ GF 30% Retardant ,UL-94Cu3601,Nickel Plating, Environmental-Protection Type)



- USA Plug Insert



(Solid & Hollow, PBT+ GF 30% Retardant ,UL-94Cu3601,Nickel Plating, Environmental-Protection Type)



- China Plug Insert



(Solid & Hollow, PBT+ GF 30% Retardant ,UL-94Cu3601,Nickel Plating, Environmental-Protection Type)



- Korea Plug Insert



(Solid & Hollow, PBT+ GF 30% Retardant ,UL-94Cu3601,Nickel Plating, Environmental-Protection Type)



- Argentina Plug Insert



(Solid & Hollow, PBT+ GF 30% Retardant ,UL-94Cu3601,Nickel Plating, Environmental-Protection Type)



- Israel Plug Insert



(Solid & Hollow, PBT+ GF 30% Retardant ,UL-94Cu3601,Nickel Plating, Environmental-Protection Type)



- Thailand Plug Insert



(Solid & Hollow, PBT+ GF 30% Retardant ,UL-94Cu3601,Nickel Plating, Environmental-Protection Type)



- Transformer Plug Insert



(Solid & Hollow, PBT+ GF 30% Retardant ,UL-94Cu3601,Nickel Plating, Environmental-Protection Type)



- Sweval Plug Insert



(Solid & Hollow, PBT+ GF 30% Retardant ,UL-94Cu3601,Nickel Plating, Environmental-Protection Type)



II) Lithium Coin Battery & Other Battery:



- Lithium Coin 3 V Battery All Sizes

CR 927	CR 1220	CR 1225	CR1616
CR 1620	CR 1625	CR 1632	CR 2016
CR 2025	CR 2032	CR 2450	As per customer requirements

- Alkaline 1.5 V LR Series Battery All Sizes

- Alkaline 23 A/27A Battery All Sizes

- Zinc Carbon 1.5V Battery All Sizes

- Ni-MH 1.2V Rechargeable Battery All Sizes

- All other Solution Lithium Coin Battery /Other Battery application Industry

- Lithium Coin Battery-CR 927



(3V Lithium Button Cell CR927 for Fidget Spinners. With the smallest diameter among 3V LiMnO₂ button cells, CR927 is a mix of an ultra-compact design and considerable power, and is usually used in blinkers, toys, calculators etc.)

- Lithium Coin Battery-CR 1220



(3V Lithium Button Cell CR1220 for Watches CR1220 is a lightweight member of the 3V lithium button cell family. It uses stainless steel as a container, lithium as cathode, electrolytic manganese dioxide as anode, lithium inorganic salt and organic solvent as electrolyte.)

- Lithium Coin Battery-CR 1225



(Reliable 3V Lithium Button Cell CR1225 CR1225 is a 3-volt watch battery in the lithium-manganese chemistry. With years of experience in coin cell battery production.)

- Lithium Coin Battery-CR 1616



(3 Volts Lithium Button Cell CR1616 CR1616 is a 3V lithium button cell model which uses an ultrathin design. It is often used to power electronic dictionaries, watches, wristbands, etc.)

- Lithium Coin Battery-CR 1620



(Quality 3V Lithium Button Cell Battery CR1620
The CR1620 battery is a type of lithium button cell known for good leakage resistance. It is non-rechargeable and usually used in electric toys, remote controls, watches, etc.)

- Lithium Coin Battery-CR 1632



(Lithium Button Cell CR1632 for E-dictionary
CR1632 is a model of 3V button cell for single use. With lithium as the cathode, electrolytic manganese dioxide as the anode, CR1632 achieves a long shelf life up to five years..)

- Lithium Coin Battery-CR 2016



(3V Lithium Button Cell Batteries CR2016
CR2016 battery cell is one of the mostly chosen 3V lithium non-rechargeable coin cells. CR2016 can be used singly or connected in series or parallel to provide a large capacity or higher voltage.)

- Lithium Coin Battery-CR 2025



(CR2025 is a coin cell that uses the Li-MnO₂ chemistry, which is non-rechargeable. Measuring 20mm in diameter and 2.5mm high, CR2025 is suitable to small electronic devices with limited space for battery, for example, toys and watches.)

- Lithium Coin Battery-CR 2032



(Durable Button Cell Battery CR2032 for Car Keys CR2032 is one of the most common lithium-manganese button cells, which measures 20 mm in diameter and 3.2 mm thick. This primary button cell is very popular in products such as RTC (real-time clock) backup power, LED lamps, digital balances, etc.)

- Lithium Coin Battery-CR 2450



(Super Durable Button Cell Battery CR2450 CR2450 is a disposable LiMnO₂ button cell that measures 24.5 mm in diameter and 5 mm thick. Due to chemical stability from the combination of manganese dioxide and metallic lithium, CR2450 delivers about 600 mAh of power and has a long shelf life up to five years.)

-Alkaline 23A/27A Series Battery all Sizes



- Alkaline 1.5V LR Series Button Cells all sizes



- **Alkaline 1.5V LR6/LR03 Series Batteries all sizes**



- **Zinc Carbon 1.5V R6/R03 Series Batteries all sizes**



- **Ni-MH 1.2V Rechargeable Batteries all sizes**



III) Plastic, Fastener, Stamped, Turned, Hybrid & OEM Parts:



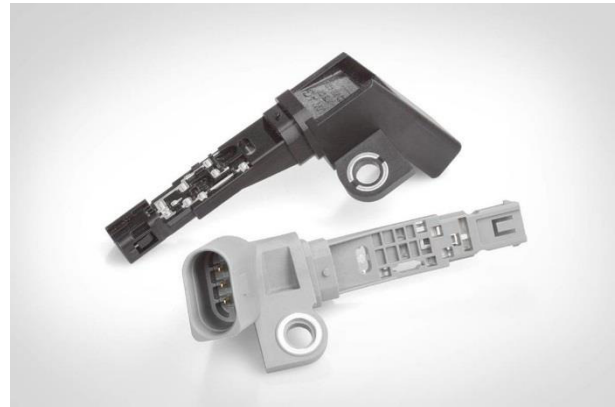
- Plastic Injection Parts
- Fastener
- Metal Blades
- Plug Pins-Solid & Hollow
- CNC Precision Metal Processing
- Cable Terminals
- Plug Moulds
- OEM Parts

- Plastic Injection Parts/OEM Parts



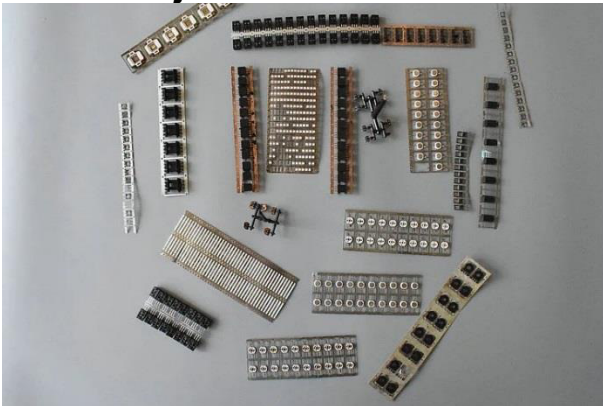
(PBT+ GF 30% Retardant Material, Plastic Injections Parts)

- Plastic Injection Parts/OEM Parts



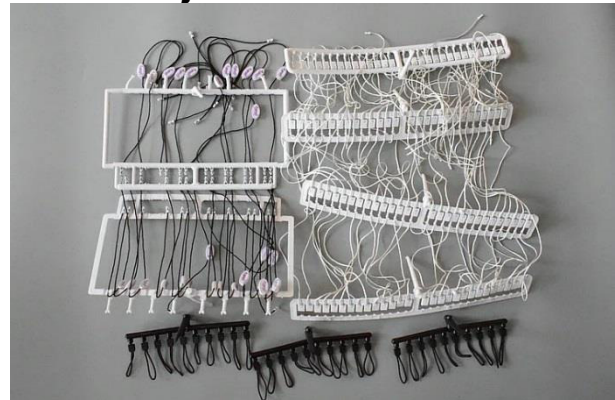
(PA66 GF15 Material-Electrical Equipment Insert Cold Runner Injection Molding Parts With 4 Plug Overmolding TPU)

- Plastic Injection Parts



(PBT+ GF 30% Retardant Material ,Precision Plastic Injections Parts)

- Plastic Injection Parts



(PBT+ GF 30% Retardant Material ,Precision Plastic Injections Parts)

- Fastener-Screws (Machine Screws)



(Machine Screws: The most popular thread used in fastening is the machine screw thread. The machine screw thread has a 60 degree thread angle made in a continual running helix pattern. It's primarily used with a nut or a tapped hole.)

- Fastener-Screws (Screws for Plastics)



(Screws for Plastic: Screws for plastics have a thread that is designed to be used in soft materials. It generally has a 30 degree flank angle thread that slices through plastic materials without inducing high stress levels and offering high pull out performance.)

- Fastener-Screws (Sheet Metal Screws)



(Sheet Metal Screws: A screw consisting of especially hardened thread allowing it to form its own internal thread when driven into sheet metal and other relatively soft materials. It is highly versatile, used in wood, fiberglass and metal, also called self-tapping screws. Available in steel and stainless steel.)

- Fastener-Screws (Socket and Shoulder Screws)



(Socket and Shoulder Screws: Socket screws have a machine screw thread and are made primarily in two materials, steel and stainless steel. The steel socket screws are made from an alloy steel and are heat treated to high tensile strengths.)

- Metal Blades /OEM Parts



(Nickel Plating, Environmental-Protection Type)



- Metal Blades /OEM Parts



(Nickel Plating, Environmental-Protection Type)



- Metal Blades /OEM Parts



(Nickel Plating, Environmental-Protection Type)



- Metal Blades /OEM Parts



(Nickel Plating, Environmental-Protection Type)



- Plug Pins-Solid & Hollow



(Nickel Plating, Environmental-Protection Type)



- Plug Pins-Solid & Hollow



(Nickel Plating, Environmental-Protection Type)



- Plug Pins-Solid & Hollow



(Nickel Plating, Environmental-Protection Type)



- Plug Pins-Solid



(Nickel Plating, Environmental-Protection Type)



- CNC Precision Metal Processing



(Nickel Plating, Environmental-Protection Type)



- CNC Precision Metal Processing



(Nickel Plating, Environmental-Protection Type)



- Cable Terminals



(Nickel Plating and Non Nickel Plating, Environmental-Protection Type)



- Plug Moulds



IV) Electrical& Electronics Parts, Crimping Machine & Injection Machine:



- Socket Insert
- Plug Tops
- Cables
- USB Cables
- Switch
- Fuses
- Liquid Mosquito Vaporizer Heater
- Injection Moulding Machine
- Crimping Machines

- Socket Insert Series



(PBT+ GF 30% Retardant , Environmental-Protection Type)



- Socket Insert Series



(PBT+ GF 30% Retardant , Environmental-Protection Type)



- Socket Insert Series



(PBT+ GF 30% Retardant , Environmental-Protection Type)



- Socket Insert Series



(PBT+ GF 30% Retardant , Environmental-Protection Type)



- Plug Tops



(PBT+ GF 30% Retardant , Environmental-Protection Type)



- Plug Tops



(PBT+ GF 30% Retardant , Environmental-Protection Type)



- Plug Tops



(PBT+ GF 30% Retardant , Environmental-Protection Type)



- Plug Tops



(PBT+ GF 30% Retardant , Environmental-Protection Type)



- Liquid Mosquito Vaporizer Heater

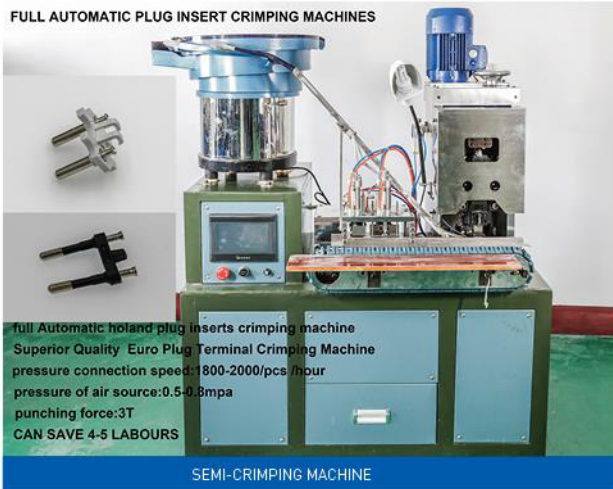


- Injection Moulding Machine



- Crimping Machines

FULL AUTOMATIC PLUG INSERT CRIMPING MACHINES



- Crimping Machines

Superior Quality Euro/Korea/Brazil/India Plug Terminal Crimping Machine



V) Metal, Building Materials & Mineral Products:



- Metal
- Building Materials
- Corrugated Steel Sheet
- Pre-Painted Galvanized Steel Coil
- Galvanized Steel Coil
- Stone Corrugated Roof Tiles
- Mineral Products
- High purity quartz
- Feldspar
- Ferro Silicon
- Mica
- Other minerals

VI) Coal, Industrial Packing, Chemical & Other Products:



- Coal
- Coconut Shell Charcoal & Value added Products
- Industrial Packing
- Steel Drums
- IBCs
- Plastic Drums
- Jerry cans
- Fibre Drums
- Water Bottles
- Chemical & Value Added Products
- Other Products

PAYMENT TERMS:

- 30/70 T/T payment (30% advance upon Contract and balance 70% against scanned / faxed copy of SGS evidencing inspection done at warehouses)
- 40% advance upon Contract and balance 60% L/C at sight, irrecoverable, confirmed transferable, issued by a prime bank, confirmed by India advising bank and strictly as per our Contract.

Trade Enquiry



WHY NAKOSHI?

While screws offer a common solution to connect materials, NAKOSHI understands that our customers need high quality and performance from even the simplest of solutions. Please request your quote.

We look forward to receiving your individual enquiries for which we are sure to be able to work out innovative and economical solutions.

If you wish to enquire about our products, please send us an email at info@nakoshigroup.com | nakoshigroup@gmail.com and we will get back to you right away.

Company Details:

Factory:

Nakoshi Global Pvt. Ltd.

Plot No. 24, Thirumalai Nagar,
Mettupalayam, Poothurai Main Road, Vanur,
Taluk, Viluppuram, Tamilnadu, Pin code :605111

Email: info@nakoshigroup.com & nakoshigroup@gmail.com

Web: www.nakoshigroup.com | Skype: Nakoshi